

1. Sarah is cooking.

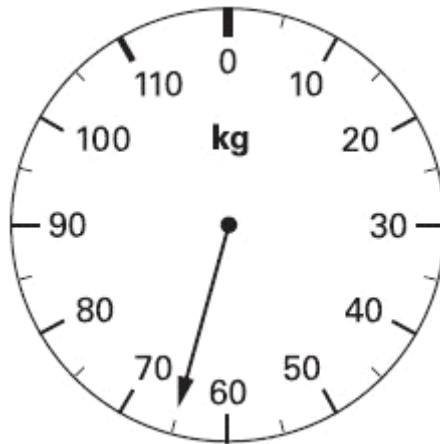
Tick (✓) the most likely capacity of the pan.




- 2.5 millilitres
- 25 millilitres
- 250 millilitres
- 2.5 litres
- 25 litres
- 250 litres

1 mark

2. This scale shows how much Mrs Patel weighs.



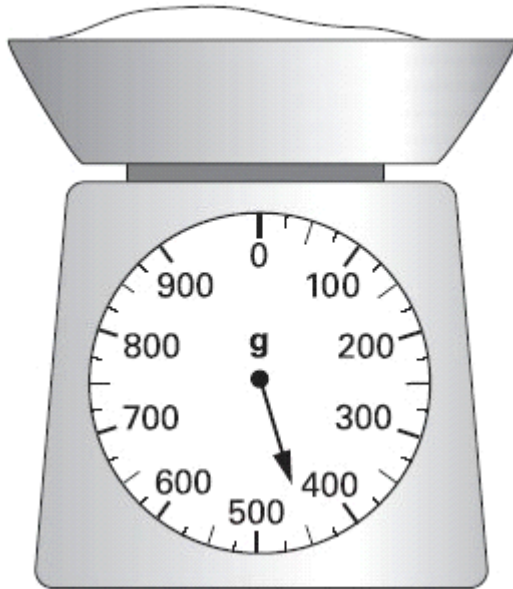
How much does Mrs Patel weigh?

 kg

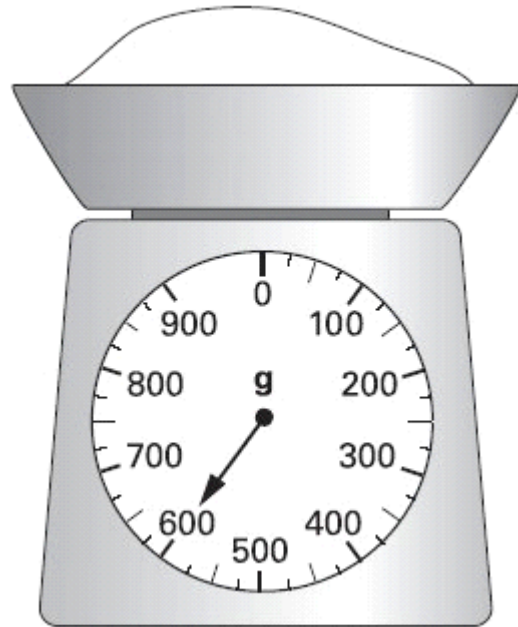
1 mark

3. Emily is making a cake.

She puts flour on the scales.



She then adds sugar to the flour.



How much sugar does she add?

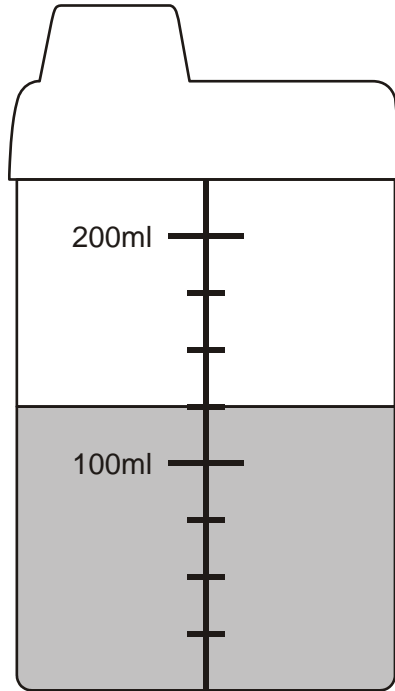


Show your **method**. You may get a mark. 


g

2 marks

4. Here is a baby's drinking cup.

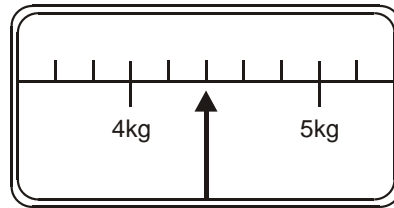


How many millilitres of water are in the cup?


 ml

1 mark

5. This scale shows the weight of Fred's cat.



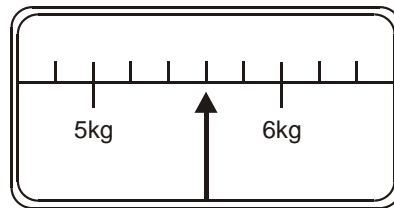
What is the weight of Fred's cat?




kg

1 mark

This scale shows the weight of Fred's dog



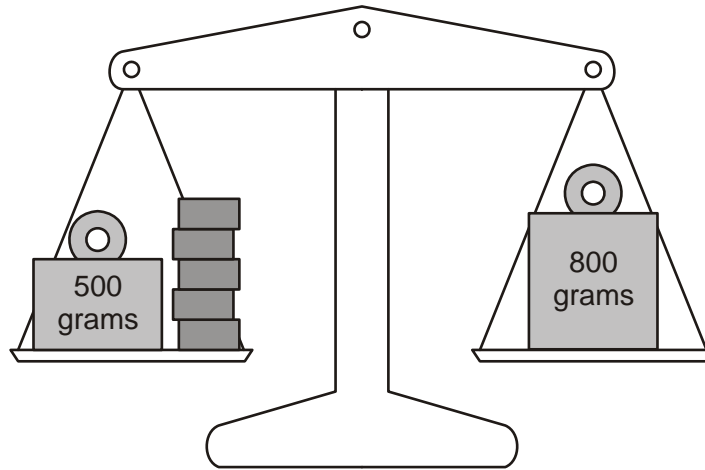
How much **more** does Fred's dog weigh than his cat?



kg

1 mark

6. Lin has five blocks which are all the same.
She balances them on the scale with two weights.



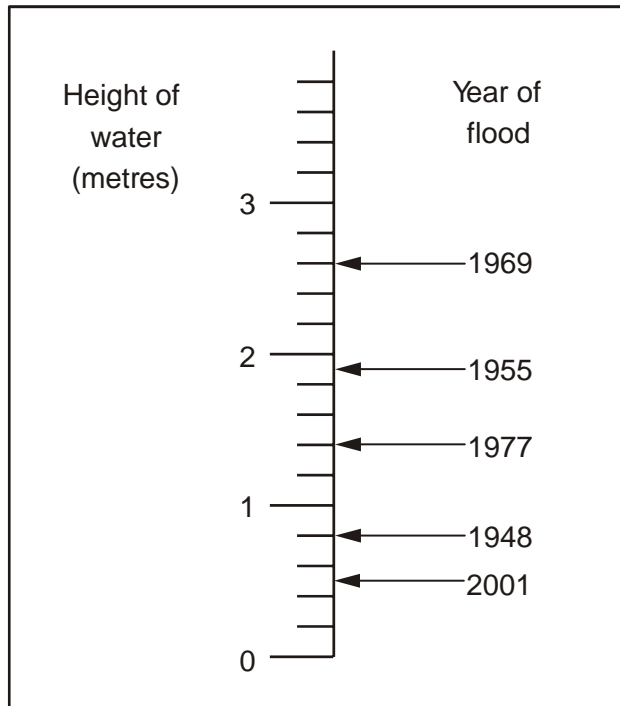
Calculate the weight of **one** block.

Show your **working**. You may get a mark.


A large rectangular box is provided for showing the student's working. On the left side of this box, there is a speech bubble containing the text "Show your **working**. You may get a mark." with an arrow pointing into the box. In the bottom right corner of the large box, there is a smaller, empty rectangular box.

2 marks

7. This scale shows the dates of floods and the height of the water in the floods.




How high was the water in the 1955 flood?

 m

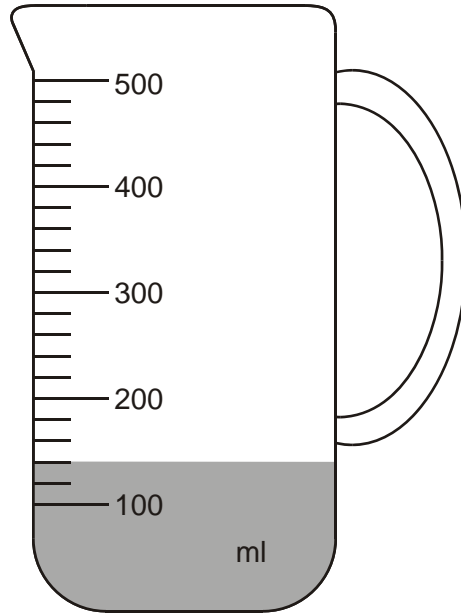
1 mark

How much higher was the water in the 1969 flood than in the 1948 flood?


 m

1 mark

8. Mr Khan makes a blackcurrant drink for a party.
He pours blackcurrant squash into a jug.

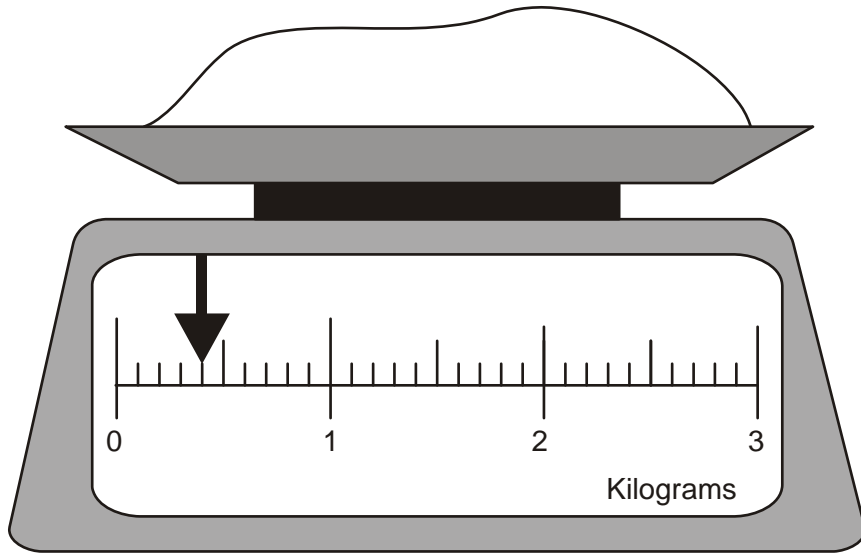


How much water must he add to make **500 millilitres** of drink?


 ml

1 mark

9. Here is some flour on a weighing scale.




How many **grams** of flour are on the scale?

 **grams**

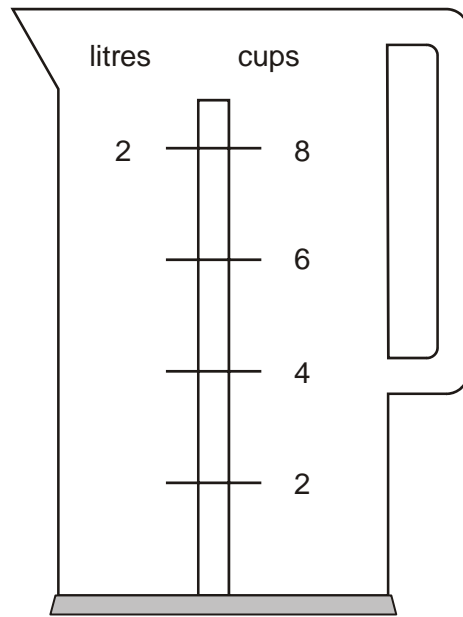
1 mark

How much more flour must be added to the scale to make 1.6 kg?



1 mark

10. Nisha's kettle holds 2 litres of water.



How many millilitres are equal to 1 cup?



1 mark

11. A packet contains **1.5 kilograms** of guinea pig food.

Remi feeds her guinea pig **30 grams** of food each day.



How many days does the packet of food last?



Show your **method**.
You may get a mark.

2 marks