



The Creative Learning Journey
.....every child matters

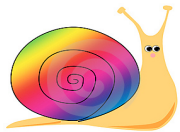
Oveston CEVC Primary School Creative Curriculum Term Overview



CLL= Communication, Language & Literacy
MD= Mathematical Development
PSED= Personal, Social & Emotional Development
PD= Physical Development
KUW= Knowledge & Understanding of the World
CD= Creative Development

CLL

- Narrative - Greek myths. Studying different Greek myths, creating new mythical characters and heroes and writing own myth. (3weeks)
- Poetry – language play. Riddles and kennings. A look at the role of a court jester. (1-2 weeks)
- Non-fiction – Instructions. Writing instructions for spells and potions!



MD

- Securing number facts, relationships and calculating - unit E1
- Counting, partitioning and calculating - unit A2
- Securing number facts, understanding shape - unit B2

PSED

- SEAL – Going for goals.
- recognising our achievements
- setting new goals
- knowing how to overcome difficulties
- recognising success

Theme Myths and Legends

CD

- Castle/dragon role play area. Chn help create their area by making swords, shields, helmets, princess hats etc for drama and story-telling.
- Whole class dragon collage (part of role play area).
- DT – Moving monsters or castle with moving draw bridge – pulley system.
- Music – folk music/country dancing.

KUW

- Visit local castle (tour)
- History – a study of medieval Britain.(kings, knights, serfs etc)
- Sc – magnets and springs. Cross-curricula links with DT.
 - ICT – simulations
 - French – vocab relating to topic.
- Medieval day – a chance to dress up, dance and have a feast.

PD

- Dance – a taste of folk and country dancing.
- Archery demo
- Jousting with hockey sticks!
- A look at the physical skills needed to be a knight.