



Liddington – Year 6 Camp

Monday 11th June – Friday 15th June 2011

Where is the camp?

A fantastic new centre in Wiltshire! PGL Liddington is a 150 acre site, minutes from the M4, with outstanding facilities and all en suite accommodation.



Formerly a conference centre and more recently a hotel, this is an outstanding purpose-built facility.

There are over 150 acres of grounds where we intend to build the most comprehensive range of activities in the market, making full use of the natural landscape including the woodland and two lakes.

The site also offers changing rooms, a pavilion, gym, floodlit all-weather sports pitch and 11 full size football pitches!



Who is going to camp?

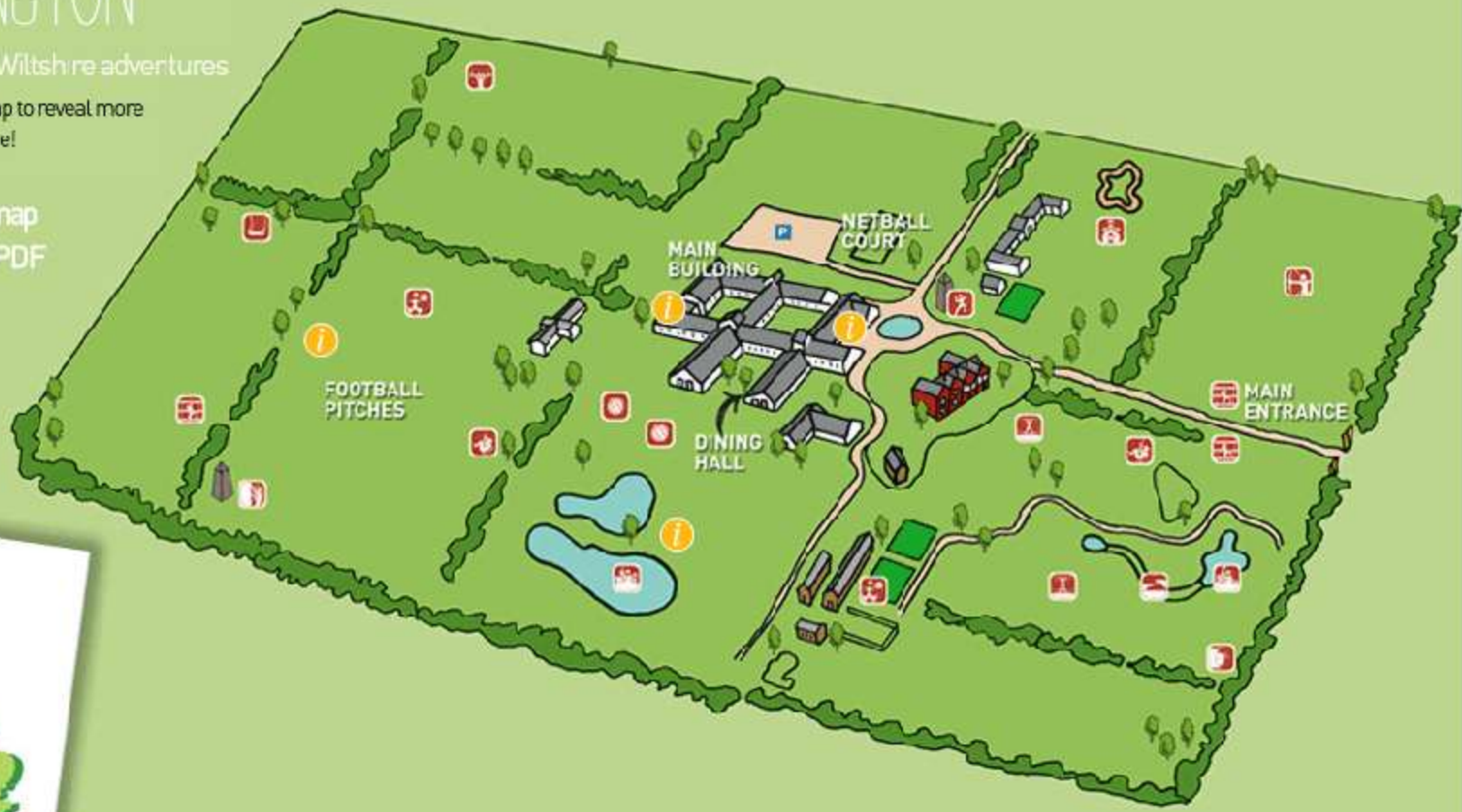
- Mrs King or Mrs Luke
- Mrs Vizard
- ?
- ?
- 28 children



LIDDINGTON

Brand new Wiltshire adventures
roll over the map to reveal more
about this centre!

[← back to map](#)
[download PDF](#)



Organisation of Activities

- Children in three groups
- 1 'groupie' assigned to us all week from 8am – 9pm.
- PGL specialist staff to lead adventure activities.
- Olveston Staff attend (take part!)



What activities are on offer?

- Activities available at Liddington



- Abseiling, Aeroball, Archery, Ball Sports, Bridge Building, Canoeing, Climbing, Crate Challenge, Fencing, First Aid, Giant Swing, Initiative Exercises, Jacobs Ladder, Low Level Ropes Course, Mountain Bike Trail, Nature Trail, Orienteering, Quad Biking, Raft Building, Sensory Trail, Survivor, Trapeze, Tree Top Study Trail, Tunnel Trail, Vertical Challenge, Zip Wire.





Daily Routine

- 8:00am Wakey Wakey!** Your Groupies will meet you at your meeting point, ready for the day!
- 8:10am Breakfast Time** – make sure you have enough food – speak to your groupie if you are still hungry!
- 9:30 – 11:00am First Activity Session** – time to meet the instructors for your first session of the day!
- 11:00 – 12:30pm Second Activity Session**
- 12:40pm Lunch Time** – make sure you have enough food – speak to your groupie if you are still hungry!
- 2:00 – 3:30 pm Third Activity Session** – time to meet the instructors for your third session of the day!
- 3:30 – 5:00pm Fourth Activity Session**
- 5:15pm Tea Time** – make sure you have enough food – speak to your groupie if you are still hungry!
- 5:45 – 7:00pm Tuck Shop** – time to spend your pocket money for the evening – remember your last night is for gifts!
- 7:00 – 8:30pm Evening Entertainment** – your Groupies will take over for this last session of the day – lots of fun and running around!
- 8:30 – 9:00pm Quiet Time** – time for you to start calming down after a long day. Hot chocolate will be available before bed.
- 9:00pm Night Night!** Your groupies will say goodnight to you, and send you back to your teachers – please make sure you get a good night's sleep, ready for another action-packed day!

☆ ☆ ☆ ☆ ☆
Have a Fantastic stay!! ☆ ☆

A typical day at Year 6 Camp!



Activities



Sense of Achievement



The Grounds

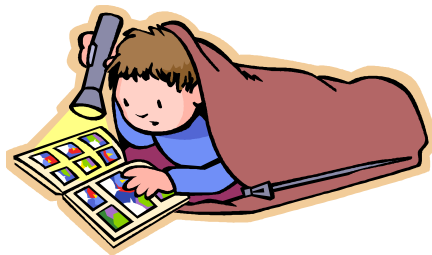


Accommodation

Accommodation Blocks

Modern purpose-built accommodation blocks around two outdoor courtyards.

Pupils: En suite rooms sleep 3-6





2 Lakes

Classroom!

Facilities



All weather
flood lit
sports pitch!



Dining
Room



Lounges



Several football
pitches





www.pgl.co.uk



PGL is the UK's leading provider of school trips and children's adventure holidays - offering outdoor education and adventures of a lifetime to children since 1957.

